

ShopFloor Management Software

Shop Floor Control & Management

ShopFloor Management

- 1 Quotations & Estimation
- 2 Purchase Orders
- 3 Materials Control
- 4 Job Costing
- 5 Shop Floor Activity Tracking

Shop Floor Management Software

If you are a small to medium-size (SME) make-to-order or contract manufacturer in search of improved efficiencies on the shop-floor, and wanting a **Production Management solution** that offers:

- A flexible shop floor management solution that allows you to manage the changes your customers throw at you every day ;
- Automation to your operation to accommodate growth and demanding customers ;
- A Fully integrated solution to the back-office accounting and creates value for your company ;

Then our **ShopFloor Manager** management & planning software is ideal for you. As your needs change and your business grows, you need something that will bring added value to your business and provide the flexibility and capabilities you need.

ShopFloor co-exists with your Accounts

ShopFloor Manager is a flexible, scalable and intelligent production planning and control system offering advanced functionality and value in the key areas of manufacturing and assembly.

Albeit **ShopFloor Manager** has been designed primarily to interface to the locally developed Accounting & ERP package - **Pastel Evolution ERP** – the *Business-2-Business* module permits **ShopFloor Manager** to interface to the best of breed accounts packages, protecting investment in those existing systems.

Estimating & Quotations

The **ShopFloor Manager** Estimating & Quotations module allows you to prepare estimates for any repeat work, taking into account your suppliers' product pricing (pulled from the database supplier-price-lists) or allowing direct entry latest product cost-price. Labour associated with each product-line can also be entered per line (or separately). Additional costs, such as consumables as percentage of the material cost can also be entered. The potential profit is known per product-line, sub-assembly and assembly prior to submitting the quotation.

Quotation can be produced directly from the Estimate(s), and the History-file permits loading previous estimates improving productivity and client response when preparing a quotation. The estimate information, the assemblies and products, is automatically available to the Production modules: as purchase orders, bill of materials (BOMs) – thus preventing double-entry and the proverbial 'finger-problems'.

Multi-level estimates can be re-calculated at click of a button as changes are made to the sub-assemblies, etc. Quotations can be designed to include your logo and company details

SUMMARY.

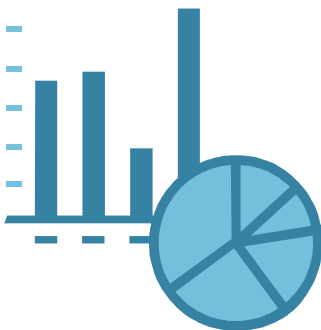
- ✓ Estimate history
- ✓ Labour & material costs
- ✓ Multi-level assembly costing
- ✓ BOM listing
- ✓ Auto-created purchase orders
- ✓ Quotations with logos

Purchase Orders

ShopFloor generates purchase orders directly from the Estimates, whilst allowing you to determine what quantity should be satisfied from your inventory store with the remainder being purchased. The purchase order module allows full tracking of orders, highlighting outstanding and receipted material.

Orders can be created by supplier, specific assembly or sub-assembly and tracked on that basis as well.

Given that this functionality is provided by a best breed ERP practice this module addresses all the needs of SME and large organisations



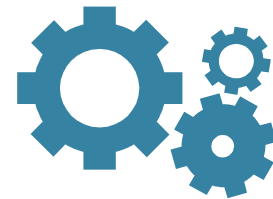
Materials Control

The raison d'etre of the ShopFloor is to give the production manager global view and control of the manufacturing process at all times, knowing where on the shop floor the job is at any point in time.

Shop floor documentation is issued with job, technical drawings can be attached, BOM listings printed together with manufacturing instructions. Each Job or works order will include:

- Job Number, delivery date, client details
- BOM listing
- Job instructions
- Tooling list
- Sub-contractor documentation

Activity tracking can be manually updated or automatically updated via bar-code readers on the shop floor

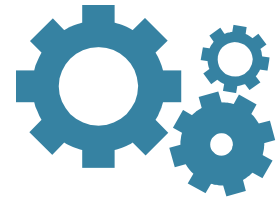


- Complete visibility of orders / jobs
- Full ShopFloor documentation
- Auto-generated BOMS
- Activity tracking via Bar-code readers

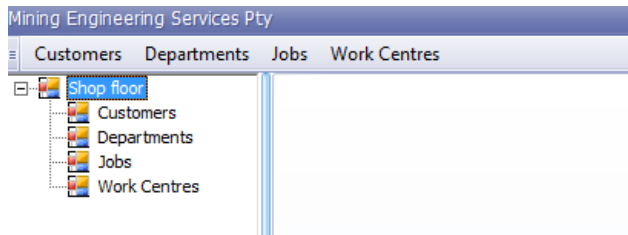
Shop Floor Activity Data Capture - bar coding technology



With bar-code readers Jobs are scanned as they progress across the shop floor, each Operation / Activity is tracked from Start to Finish rendering the actual time taken for each of the operations and these times are immediately linked to the respective job in the Job Costing module thus reflecting the true cost of labour



Activity Tracking on Shop Floor



Mining Engineering Services Pty

Customers Departments Jobs Work Centres

Shop floor

Customers Departments Jobs Work Centres

Customers Departments Jobs

Add Edit Delete Refresh Export Grid View

Drag a column header here to group by that column

Expected Devliery Date	Order Price	Start Date	End Date	Profit Or Left Over	Labour Cost	Material Cost	Description
2011/07/04	2719.73	2011/06/28	2011/06/30	1002.71	71502	1002	Repair Engine
2011/07/04	2717.04	2011/06/28	2011/06/30	1001.72	71431	1001.01	Manufacturing
2011/07/08	2714.3	2011/08/02	2011/08/02	1000.71	71359	1000	Testing

Job Activities

Group

Customer: BLITZ POWERTOOL SERVICES Order Price: R 2 719,73

Start Date: 2011/06/28 Labour Cost: R 71 502,00

End Date: 2011/06/30 Material Cost: R 1 002,00

Expected Devliery Date: 2011/07/04 Profit Or Left Over: R 1 002,71

Job Details

Drag a column header here to group by that column

Work Centre	Hours	Start Date	End Date	Value
WELDING	9	2011/05/11	2011/05/11	R 8 000,00
COUNTER BORE	18	2011/06/14	2011/06/14	R 160 000,00
SKIVE/BURN	7	2011/05/10	2011/05/10	R 7 000,00

Record 1 of 3

Save Cancel

Job Visibility

- Complete visibility of orders / jobs
- Full ShopFloor documentation
- Auto-generated BOMS
- Activity tracking via Bar-code readers